

# ACCESSORIES FOR CABINETS

APW President offers a wide range of accessories for 19" cabinet systems. These accessories enable the system integrator to position and connect different equipment in a professional manner, in step with current worldwide practices. Use of correct accessories is crucial for the safety of the equipment, increasing reliability, reducing the time to integrate, and also for simplifying field maintenance of complex electronic equipment. Please consult the Accessory Selection chart to determine the correct choice of the accessory compatible with the product group.

## SHELVES AND TRAYS

### Stationary Shelves

Stationary shelves are useful for placing equipment that are not 19" wide into 19" cabinets. These shelves are fixed directly to the 19" vertical angles. They are provided with ventilation slots for easy air circulation. Load capacity is 50 kgs for normal stationary shelves.



*Stationary Shelf*

### Ordering Information

For Cyberack	
Shelf, Stationary 400mm D / 600W	86-1650
For Cyberack and Cyberack Dix	
Shelf, Stationary 475mm D / 600W	86-1632
Shelf, Stationary 575mm D / 600W	86-1634
Shelf, Stationary 725mm D / 600W	86-1639



*Sliding Shelf*

### Sliding Shelves

Sliding shelves are provided with telescopic slides for 19" mounting. These are useful when equipment placed on the shelves is to be drawn out for easy accessibility during servicing. Load capacity is 35 kgs for 1U shelves and 100 kgs for the 2U shelves.

### Ordering Information

Tray, ASM, MS 1U 19" + BB Slides	86-1635 *
Tray MS 2U, 19" W / 800D, MS Sid	86-1786
Tray MS 2U, 800W / 800D, MS Sid	86-1788

\* For Cyberacks of 600mmD please specify 86-1655 instead of 86-1635

### Cantilever Shelves

These shelves are useful for light, non-19" wide equipment. They are fixed to the front mounting angles and have a load capacity of 20 kgs. They occupy 2U height.



*Cantilever Shelf*

### Ordering Information

Shelf, Cantilever, 19", 1U / 255mmD	86-1640
Shelf Cantilever, 19", 2U / 400mmD	86-1642

### Heavy Duty Shelves

For applications where heavy loads up to 100 kgs have to be supported.

#### Ordering Information

Shelf, Stationary, Hvy Dty 400mmD/600W	86-1651
Shelf, Stationary, Hvy Dty 575mmD/600W	86-1859
Shelf, Stationary, Hvy Dty 725mmD/600W	86-1860
Shelf, Hvy Dty 575D/600W + Angle, 1 pr	86-1833
Shelf, Hvy Dty 725D/600W + Angle, 1 pr	86-1834
Shelf, Hvy Dty 575D/800W + Angle, 1 pr	86-1835
Shelf, Hvy Dty 725D/800W + Angle, 1 pr	86-1836
Shelf, Hvy Dty 725D/600W + Angle, 2 prs	86-1744



Heavy Duty Shelf

### Rotary Keyboard Tray

The rotary keyboard tray is ideal for 19" cabinets. This tray ensures that the keyboard can be easily drawn out and used, even when it is wider than the entry into the rack. There is also enough room for a mouse to be placed on the tray.

#### Ordering Information

KB Tray, Rotary, 19"/ 600D + Slides	86-1771*
KB Tray, Rotary, 19"/ 800D + Slides	86-1772
KB Tray, Rotary, 19"/ 1000D + Slides	86-1885
KB Tray, Steel for 800W + Slides	86-1840

\* For Cyberacks of 600mmD please specify 86-1888 instead of 86-1771



Rotary Keyboard Tray

## SUPPORTS AND ANGLES

### Support Angles

These support angles are designed for equipment which are 19" compatible and need to be supported along their depth. They are supplied in pairs and are rated for 50 kgs & 100 kgs load.

#### Ordering Information

Suprt Angles, Hvy Dty 475mmD	70-1165
Suprt Angles, Hvy Dty 575mmD	70-1166
Suprt Angles, Hvy Dty 675mmD	70-1171
Suprt Angles, Hvy Dty 775mmD	70-1173
Suprt Angles, Med Dty 475mmD	70-1175
Suprt Angles, Med Dty 575mmD	70-1176
Suprt Angles, Med Dty 675mmD	70-1177
Suprt Angles, Med Dty 775mmD	70-1178



Support Angle



19" Equipment Mounting Angles for Cyberack and Cyberack DLX

### 19" Equipment Mounting Angles

Equipment Mounting Angles are supplied in pairs to provide 19" mounting positions. Square slots designed to accept captive cage Nuts are located on universal centres. These Mounting Angles can be attached directly to the corner posts of the cabinets, or to the horizontal supports provided. With this arrangement front-to-rear adjustment is possible throughout the depth of the cabinets, so as to provide recessing from front and rear doors. These 19" mounting angles are included in the scope of supply and need not be ordered separately.

### Ordering Information

For Cyberack

Angle 19" Vertical Support, 24U	87-6191
Angle 19" Vertical Support, 30U	87-6192
Angle 19" Vertical Support, 36U	87-6193
Angle 19" Vertical Support, 42U	87-6194
Angle 19" Vertical Support, 45U	87-6226

For Cyberack DLX

Angle 19" Vertical Support, 26U	86-1943
Angle 19" Vertical Support, 32U	86-1944
Angle 19" Vertical Support, 38U	86-1945
Angle 19" Vertical Support, 44U	86-1946

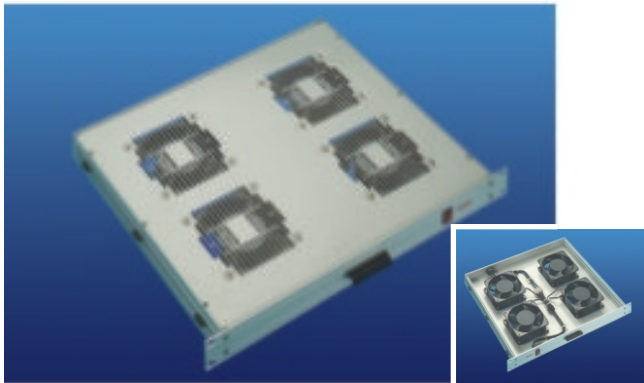
## ELECTRICAL ITEMS

### Fan Tray

These are 19" mountable fan trays used to position cooling fans ( 90CFM ) at any convenient height inside the cabinet. The fan trays are useful when equipment mounted inside the cabinet need forced air cooling. They are suitable for mounting 2 or 4 fans. Fans must be ordered separately.

### Ordering Information

Tray Fan, 1U 2-Fan Position	86-1550
Tray Fan, 1U 4-Fan Position	86-1551
Tray Fan 19"Adjustable, 1U	86-1562



Fan Tray

### Fan Housing Unit

Top-mounted fan housing units hold up to 4 fans and are fitted to the underside of top cover. Fans are to be ordered separately.

### Ordering Information

Fan Housing Unit, 90 CFM, 2 Fan	86-1553-2
Fan Housing Unit, 90 CFM, 4 Fan	86-1554-4



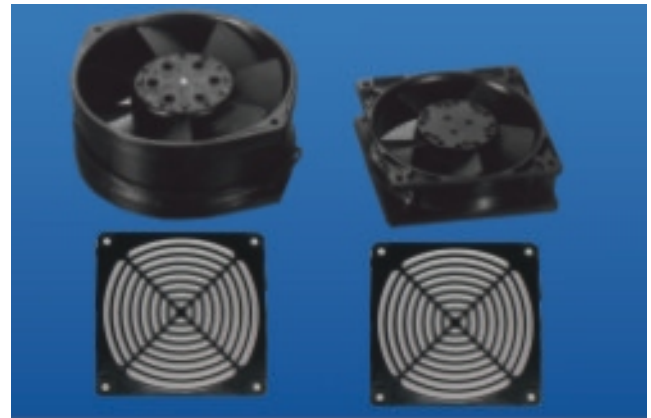
Fan Housing Unit

### Cooling Fans

Cooling fans are used for thermal management inside equipment cabinets. These fans can be fitted in fan housing units fixed to the underside of cabinet covers, or in 19" fan trays which can be located close to sensitive equipment that needs to be cooled.

#### Ordering Information

Fan 230VAC 90 CFM	86-1566
Fan 230VAC 250 CFM	86-1567
Finger Guard for 90 CFM Fan	86-1601
Finger Guard for 250 CFM Fan	86-1602



Cooling Fans with Finger Guards

### Fan Module

These Fan Modules are ideal for introducing fresh air into densely populated cabinets. This 3U high/19" wide unit contains a high quality centrifugal impeller fan that draws air in horizontally through 10 micron filters and expels it upwards into the cabinet.

#### Ordering Information

Fan Module 3U X-Flow, Impeller	86-1561
--------------------------------	---------



X-Flow Fan Module

### Earthing Accessories

Copper earthing bars and straps are available for providing good quality electrical ground connections. Earthing brackets are available on all side panels and steel doors. These can be used for connecting side panels or doors to electrical ground bars by means of the electrical straps.

#### Ordering Information

Strap, Earthing, Braided 300mm	86-1507
Bar, Earthing, Cu, 16 X 3 X 375mm	86-1508
Earth Continuity Kit	86-1718
Earthing Lead, Cu, 40 / 35 L=200mm	86-1503
Earthing Lead, Cu, 40 / 35 L=300mm	86-1504
Bar, Earthing, Cu, 22U-28U	86-1509
Bar, Earthing, Cu, 30U-36U	86-1510
Bar, Earthing, Cu, 39U-46U	86-1511



Earthing Accessories

### Power Distribution Units

The AC Mains Distribution box is designed for 19" horizontal mounting. It has a 15A MCB, a neon indicator and a 3.5 meter cable for connection to the external power source. Standard models have six 5A sockets. A special model is also available with three 15A sockets. A model with Spike Suppression is also available.

#### Ordering Information

AC Distribution Box ( 6 x 5A )	86-1540
AC Distribution Box + Spike Suppressor	86-1540-1
AC Distribution Box + H / W, ( 3 X 15A )	86-1810
PDU 1U, 10 X IEC Sckts, 15A MCB	86-1547
Inter connect cord 1.5mtr, 4A	88-1514





AC Mains Channel

### AC Mains Channel

AC Mains Channels are designed for vertical mounting at the rear of the cabinet. A range of such channels of different lengths are available offering 5A, 15A and IEC sockets to suit cabinet heights. A special version with an Ammeter is also available to monitor current drawn by the equipment.

#### Ordering Information

AC Mains Chnl, 22U - 28U ( 8 X 5A )	86-1541
AC Mains Chnl, 30U - 36U ( 10 X 5A )	86-1542
AC Mains Chnl, 40U - 46U ( 14 X 5A )	86-1543
AC Mains Chnl, 22U - 28U ( 3 x 15A )	86-1811
AC Mains Chnl, 30U - 36U ( 4 x 15A )	86-1812
AC Mains Chnl, 40U - 46U ( 8 x 15A )	86-1813

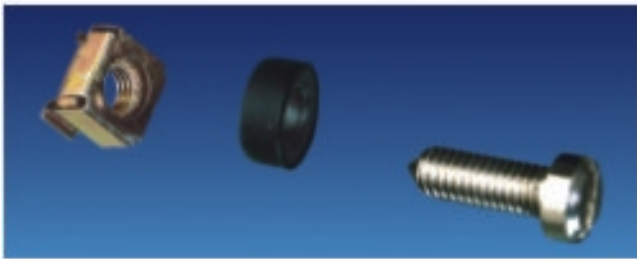
## HARDWARE

### Captive Mounting Hardware

Front panel captive hardware sets are required for fixing 19" rack equipment directly to the mounting angles in the equipment cabinets.

#### Ordering Information

Hardware Set, Frnt Pnl Cptv, Sqr	70-1037
Hardware, Frnt Pnl, Sqr, Pkt of 20	70-1037-1



Captive Mounting Hardware

### Aluminium Blank Panels

Blank 19" panels are useful for covering unused space at the front of the cabinet. They are made of 3.0mm thick aluminium sheets and are anodised.

#### Ordering Information

Panel, Blank 19", 1U, Al 10SWG	10-9301
Panel, Blank 19", 2U, Al 10SWG	10-9302
Panel, Blank 19", 3U, Al 10SWG	10-9303
Panel, Blank 19", 4U, Al 10SWG	10-9304
Panel, Blank 19", 5U, Al 10SWG	10-9305
Panel, Blank 19", 6U, Al 10SWG	10-9306
Panel, Blank 19", 7U, Al 10SWG	10-9307
Panel, Blank 19", 8U, Al 10SWG	10-9308
Panel, Blank 19", 9U, Al 10SWG	10-9309
Panel, Blank 19", 10U, Al 10SWG	10-9310
Panel, Blank 19", 11U, Al 10SWG	10-9311
Panel, Blank 19", 12U, Al 10SWG	10-9312



Aluminium Blank Panels

### Lifting Bolts

These cold forged eye-bolts have a load rating of 400 kgs each. Four eye bolts are required for each cabinet.

#### Ordering Information

Bolt, Lifting, for Racks, Each	86-1095
--------------------------------	---------



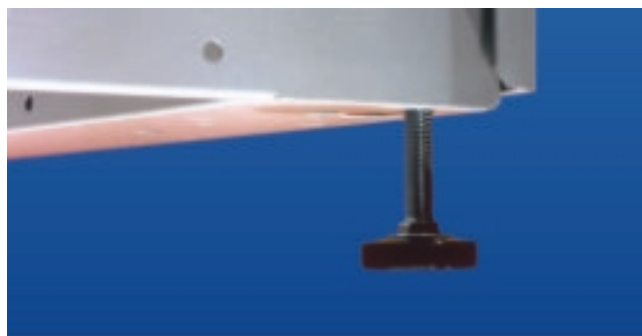
Lifting Bolts

### Legs

Levelling legs allow the cabinet to be levelled on uneven surfaces. A special adapter plate is necessary if these legs are to be used with castors.

#### Ordering Information

Legs, Screw Adjus, M10, CY, Each	86-3340
Legs, Screw Adjus, M10, CX, Each	86-3341



Legs

### Castors

Castors are an useful optional item for providing mobility to floor standing cabinets. Normally two castors with foot operated brakes and two without brakes are used.

#### Ordering Information

Castor, Tyreman, Std, 100Kg.	86-1516
Castor, Tyreman, FT Brake, 100Kg	86-1518
Castor, Heavy Duty w/o Brake, 250Kg	86-1526
Castor, Heavy Duty with Brake, 250Kg	86-1526-1



Castors



Castor for Cyberack

### Base Frames

Base frames are welded steel structures used to provide rigidity. Their height of 100mm provides additional clearance for introducing cables into the cabinets from below.

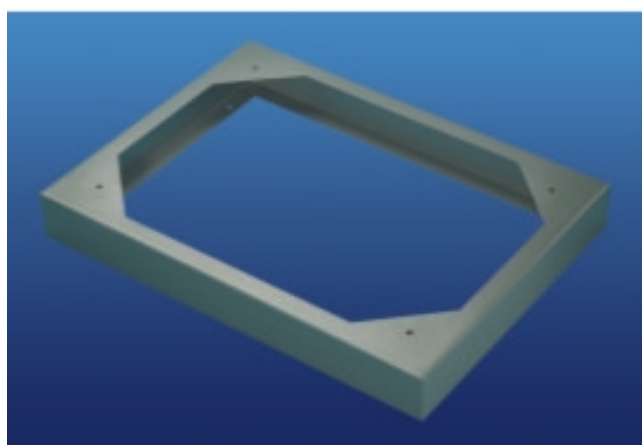
#### Ordering Information

For Cyberack

Base Frame, 600mmW x 600mmD	87-6306
Base Frame, 600mmW x 800mmD	87-6307
Base Frame, 600mmW x 1000mmD	87-6308

For Cyberack Dlx

Base Frame, 600mmW x 650mmD	86-9220
Base Frame, 600mmW x 800mmD	86-9230
Base Frame, 600mmW x 1000mmD	86-9240



Base Frame

### Coupling Hardware

Any number of cabinets can be coupled together side-by-side. The coupling hardware set consists of a sturdy steel plate and fixing hardware. Depending on the height of the cabinets, four to six sets are needed for each pair of cabinets to be coupled together.

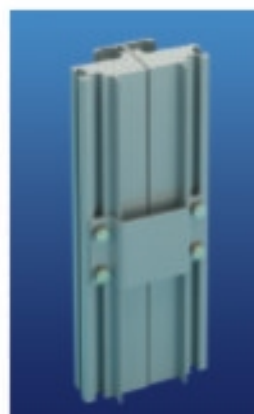
#### Ordering Information

For Cyberack

Hardware, Coupling Set	86-1098
------------------------	---------

For Cyberack Dlx

Hardware, Coupling Set	86-1099
------------------------	---------



Coupling Hardware