

HARDWARE



Captive Mounting Hardware

Captive Mounting Hardware A

Front panel captive hardware sets are required for fixing 19" rack equipment directly to the mounting angles in the equipment cabinets.

Ordering Information

For Cyberack, Cyberack Dlx	
Hardware Set, Frnt Pnl Cptv, Sqr	70-1037
Hardware, Frnt Pnl, Sqr, Pkt of 20	70-1037-1
For Bay Rack	
Hardware, Pnl, Mtg, Bay Rack, 20Pkt	70-1038-1



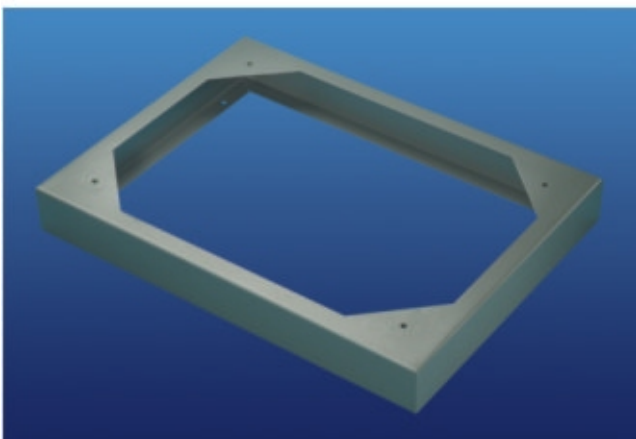
Aluminium Blank Panels

Aluminium Blank Panels A

Blank 19" panels are useful for covering unused space at the front of the cabinet. They are made of 3.0mm thick aluminium sheets and are anodised.

Ordering Information

Panel, Blank 19", 1U, Al 10SWG	10-9301
Panel, Blank 19", 2U, Al 10SWG	10-9302
Panel, Blank 19", 3U, Al 10SWG	10-9303
Panel, Blank 19", 4U, Al 10SWG	10-9304
Panel, Blank 19", 5U, Al 10SWG	10-9305
Panel, Blank 19", 6U, Al 10SWG	10-9306
Panel, Blank 19", 7U, Al 10SWG	10-9307
Panel, Blank 19", 8U, Al 10SWG	10-9308
Panel, Blank 19", 9U, Al 10SWG	10-9309
Panel, Blank 19", 10U, Al 10SWG	10-9310
Panel, Blank 19", 11U, Al 10SWG	10-9311
Panel, Blank 19", 12U, Al 10SWG	10-9312



Base Frame

Base Frames CX CY

Base frames are welded steel structures used to provide rigidity. Their height of 100mm provides additional clearance for introducing cables into the cabinets from below.

Ordering Information

For Cyberack	
Base Frame, 600mmW x 600mmD	87-6306
Base Frame, 600mmW x 800mmD	87-6307
Base Frame, 600mmW x 1000mmD	87-6308
Base Frame, 600mmW x 1200mmD	87-6388
Base Frame, 800mmW x 600mmD	87-6389
Base Frame, 800mmW x 800mmD	87-6309
Base Frame, 800mmW x 1000mmD	87-6310
For Cyberack Dlx	
Base Frame, 600mmW x 800mmD	86-9230
Base Frame, 600mmW x 1000mmD	86-9240
Base Frame, 600mmW x 1200mmD	86-9250
Base Frame, 800mmW x 800mmD	86-9330
Base Frame, 800mmW x 1000mmD	86-9340

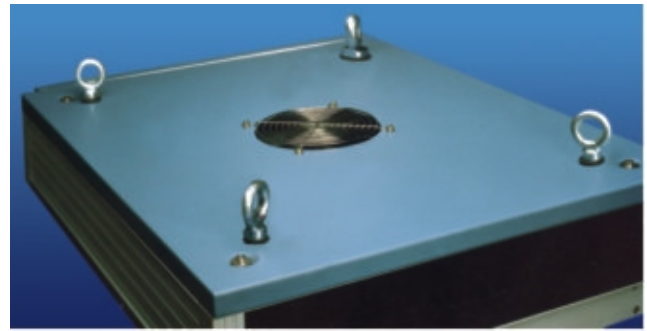
Lifting Bolts



These cold forged eye-bolts have a load rating of 400 kgs each. Four eye bolts are required for each cabinet.

Ordering Information

Bolt, Lifting, for Racks	86-1095
--------------------------	---------



Lifting Bolts

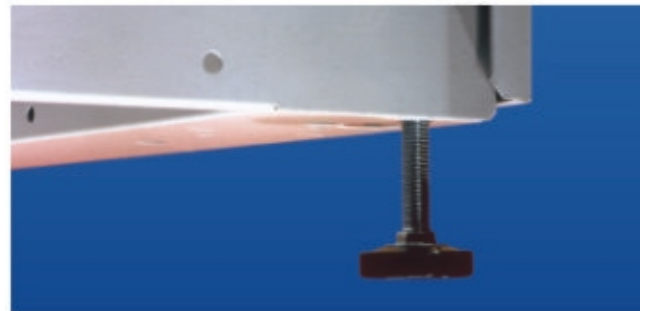
Legs



Levelling legs allow the cabinet to be levelled on uneven surfaces. A special adapter plate is necessary if these legs are to be used with castors.

Ordering Information

Legs, Screw Adjus, M10, CY, Each	86-3340
Legs, Screw Adjus, M10, CX, Each	86-3341



Legs

Castors



Castors are an useful optional item for providing mobility to floor standing cabinets. Normally two castors with foot operated brakes and two without brakes are used.

Ordering Information

For Cyberack	
Castor, Tyreman, Std, 100Kg.	86-1516
Castor, Tyreman, FT Brake, 100Kg	86-1518
For Cyberack Dlx	
Castor, Heavy Duty w/o Brake, 250Kg	86-1526
Castor, Heavy Duty with Brake, 250Kg	86-1526-1



Castors



Castor for Cyberack

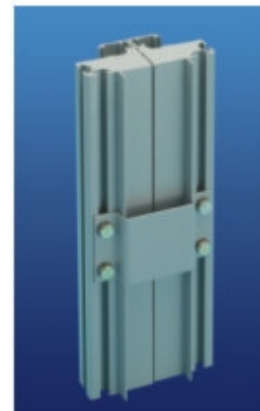
Coupling Hardware



Any number of cabinets can be coupled together side-by-side. The coupling hardware set consists of a sturdy steel plate and fixing hardware. Depending on the height of the cabinets, four to six sets are needed for each pair of cabinets to be coupled together.

Ordering Information

For Cyberack	
Hardware, Coupling Set	86-1098
For Cyberack Dlx	
Hardware, Coupling Set	86-1099



Coupling Hardware