

SUPPORTS AND ANGLES

Reducing Channels

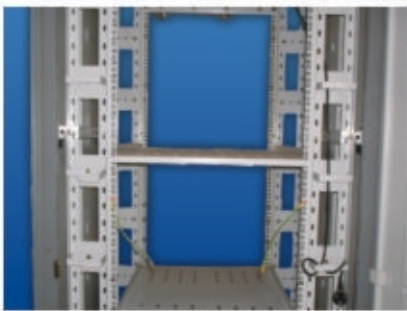
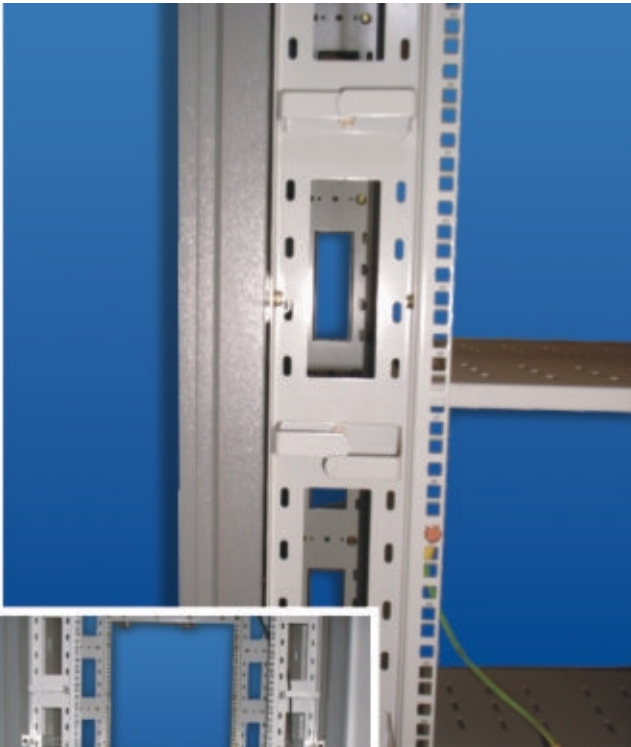


Cabinets of 800mmW are provided with 2 pairs of Reducing Channels as standard supply, along with the mounting hardware and fasteners. They therefore do not have to be ordered separately.

Reducing Channels make it possible for an 800mm wide cabinet to be converted for the mounting of 19" wide equipment directly to the vertical mounting angles.

Ordering Information

For Cyberack		
Reducing Channel Kit, 36U, 800W		86-1881
Reducing Channel Kit, 42U, 800W		86-1882
Reducing Channel Kit, 45U, 800W		86-1883
For Cyberack Dlx		
Reducing Channel Kit, 38U, 800W		86-1953
Reducing Channel Kit, 44U, 800W		86-1954



Reducing Channels



Support Angle

Support Angles



These support angles are designed for equipment which are 19" compatible and need to be supported along their depth. They are supplied in pairs and are rated for 50 kgs & 100 kgs load.

Ordering Information

Suprt Angles, Hvy Dty	475mmD	70-1165
Suprt Angles, Hvy Dty	575mmD	70-1166
Suprt Angles, Hvy Dty	675mmD	70-1171
Suprt Angles, Hvy Dty	775mmD	70-1173
Suprt Angles, Med Dty	475mmD	70-1175
Suprt Angles, Med Dty	575mmD	70-1176
Suprt Angles, Med Dty	675mmD	70-1177
Suprt Angles, Med Dty	775mmD	70-1178

19" Equipment Mounting Angles

Equipment Mounting Angles are supplied in pairs to provide 19" mounting positions. Square slots designed to accept captive cage Nuts are located on universal centres. These Mounting Angles can be attached directly to the corner posts of the cabinets, or to the horizontal supports provided. With this arrangement front-to-rear adjustment is possible throughout the depth of the cabinets, so as to provide recessing from front and rear doors. These 19" mounting angles are included in the scope of supply and need not be ordered separately.

Ordering Information

For Cyberack

Angles 19" Vert Suprt, 24U	87-6191
Angles 19" Vert Suprt, 30U	87-6192
Angles 19" Vert Suprt, 36U	87-6193
Angles 19" Vert Suprt, 42U	87-6194
Angles 19" Vert Suprt, 45U	87-6226

For Cyberack Dlx

Angles 19" Vert Suprt, 26U	86-1943
Angles 19" Vert Suprt, 32U	86-1944
Angles 19" Vert Suprt, 38U	86-1945
Angles 19" Vert Suprt, 44U	86-1946



19" Equipment Mounting Angles for Cyberack and Cyberack DLX

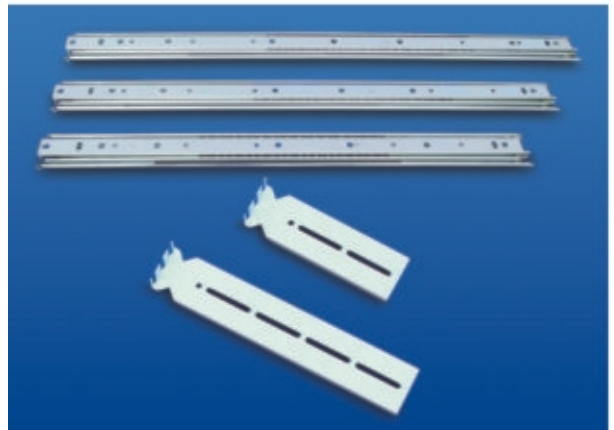
Telescopic Slides

Telescopic Slides are meant for the housing of rack-mount electronic equipment in 19" enclosure systems. They are particularly useful in applications where equipment needs to be drawn outside the main system cabinet for maintenance or replacement.

Three basic types of Telescopic Slides are available to suit different application needs. Aluminium three-section ball-bearing slides can support upto 70 kgs at full extension and are corrosion resistant. The simple friction type steel slides are suitable for load upto 30 kgs while high quality steel ball-bearing slides are available for a variety of load-ratings and applications.

Ordering Information

Slides, MS BB Sleek, 18"	70-0140
Slides, MS BB Sleek, 20"	70-0150
Slides, MS BB Sleek, 22"	70-0160
Slides, MS BB Sleek, 18" mtg	70-0141
Slides, MS BB Sleek, 20" mtg	70-0151
Slides, MS BB Sleek, 22" mtg	70-0161
Slides, MS BB 100 kg, 550mm mtg	70-0181



Telescopic Slides