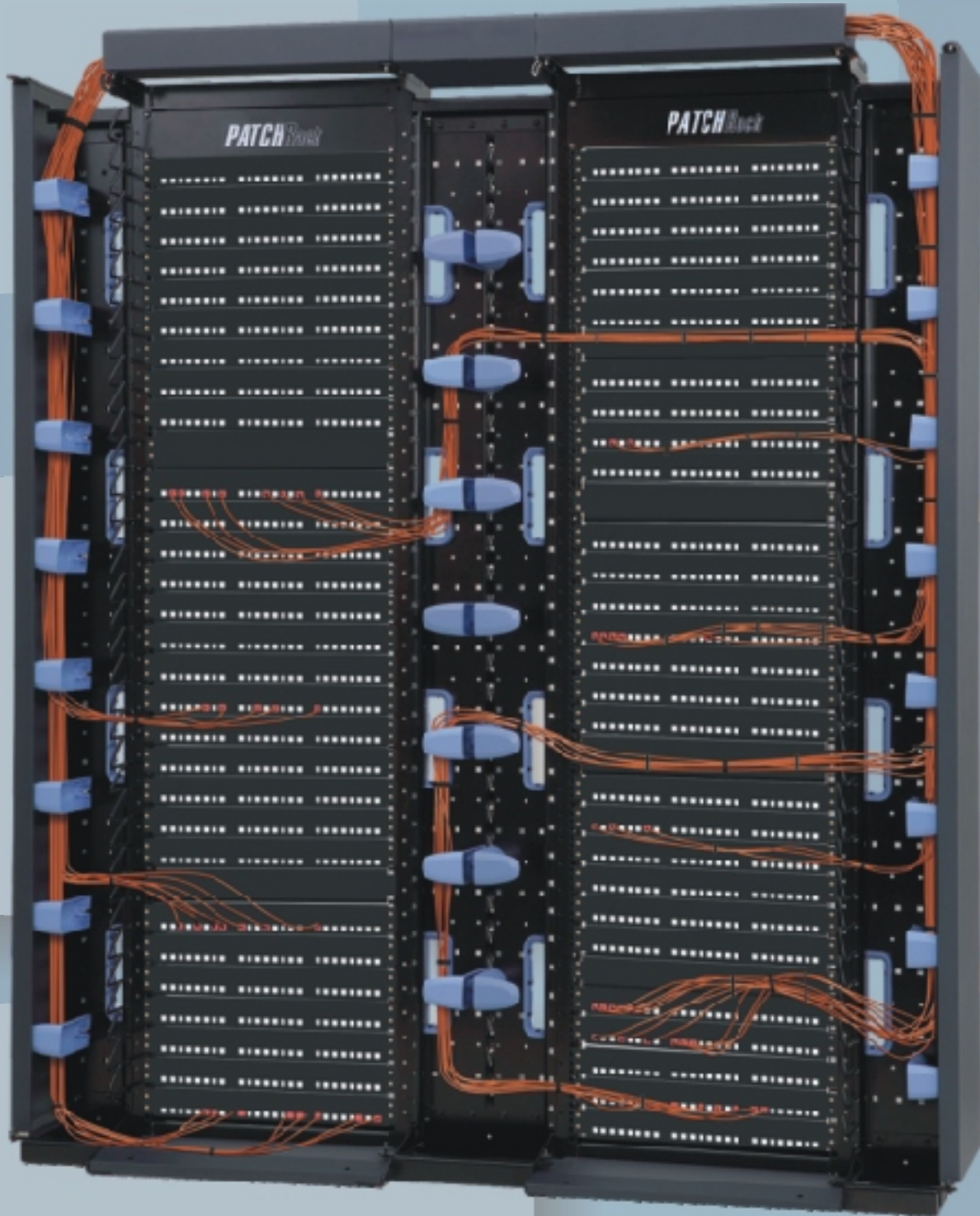


PATCH Rack



The first name in enclosure systems



DEDICATED CABLING FRAME

In today's computer networks efficient cable management has a direct impact on network performance and data bandwidth. Managing data cables has become a critical challenge for Data Center Managers. With the introduction of the new generation of thicker UTP cables it has become imperative to maintain the optimal bend radii and to limit physical stress on the cable, by avoiding stretching, twisting and sagging. President's PATCHRack addresses these issues with its innovative, scalable and modular open frame architecture, complemented by a wide range of well-engineered accessories and fittings that provide better management and distribution of UTP cables.

① PVC CABLE MANAGER 1U,



PVC Cable Managers provide a solution to organize, protect and manage network cables. Cable fingers simplify cable routing during installation and maintenance. **Order Code: 86-1548**

⑮ WINDOW MOULDING



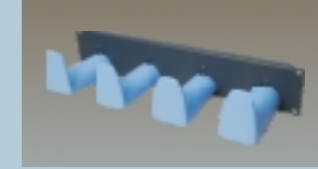
Window Mouldings are fitted on to vertical cable channels. They clip into the apertures in the cable channels, providing a smooth curved edge through which cables can be passed. **Order Code: 86-1708-03**

⑭ CABLE HANGER



Cable Hangers are vertically mounted on either side of the frame. They are coated with PVC so as to prevent cable damage and provide necessary support to cables. **Order Code: PR-3042-04**

⑬ CAT 5 CABLE RETENTION PANEL 2U



19" Cable Retention Panel is fitted with four Cable Retention Bobbins. These Retention Bobbins support and control the cable radii, as well as forming a cabling trough which alleviates the need for cable ties or velcro ties. **Order Code: 86-1763**

② CABLE RETENTION BOBBINS



Cable Retention Bobbins are designed to hold cables along the vertical cable channel and take care of the cable bend radii as well. **Order Code: 86-1709-03**

⑫ CABLE MANAGEMENT PANEL 2U



19" Cable Management Panels are fitted with four semicircular bobbins which support and control cable radii. Cable ties or velcro ties can be utilized to fix the cables to the bobbins, if desired. **Order Code: 86-1762**

③ SHELF, CANTILEVER 19", 1U / 255mmD



Cantilever Shelves are used to mount equipment that are non-19" wide. These shelves are fixed to the front frame and have a load carrying capacity of 20 kgs. **Order Code: 86-1640**

⑪ PDU 1U, 10 X IEC SCKTS MCB 15A



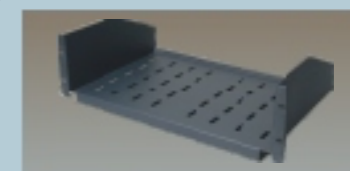
This Power Distribution Unit is designed for 19" mounting and occupies 1U space. The standard model has ten IEC C13 sockets with a neon Indicator and MCB of 15 Amps. Interconnect chords have to be ordered separately. **Order Code: 86-1547**

④ CABLE STORAGE SHELF 2U



This 2U 19" Shelf unit is supplied complete with four semicircular bobbins so as to provide storage for excess lengths of cables. **Order Code: 86-1764**

⑩ SHELF, CANTILEVER 19", 2U / 400mmD



These Shelves are useful for light, non-19" wide equipment. They are fixed to the front frame and have a load capacity of 20 kgs. They occupy 2U height. **Order Code: 86-1642**

⑤ CABLE MANAGER 1U, 19" MOUNTING



Cable managers are useful for routing cables horizontally along the front of the frame without sagging. This helps to provide a neat and uncluttered overall appearance. **Order Code: 86-1633**

⑨ CABLE MANAGER 2U, 19" MTG.



Cable Managers are useful for routing cables horizontally along the front of the frame without sagging. Cable Managers have loops of 2U size to accommodate more cables. **Order Code: 86-1720**

⑥ AC DISTRIBUTION BOX (6X5A)



The AC Distribution Box is designed for 19" horizontal mounting. ACDB comes with 6 sockets of 5 Amps each, a neon indicator and MCB of 15 Amps. **Order Code: 86-1540**

⑦ AC DISTRIBUTION (4X15A)

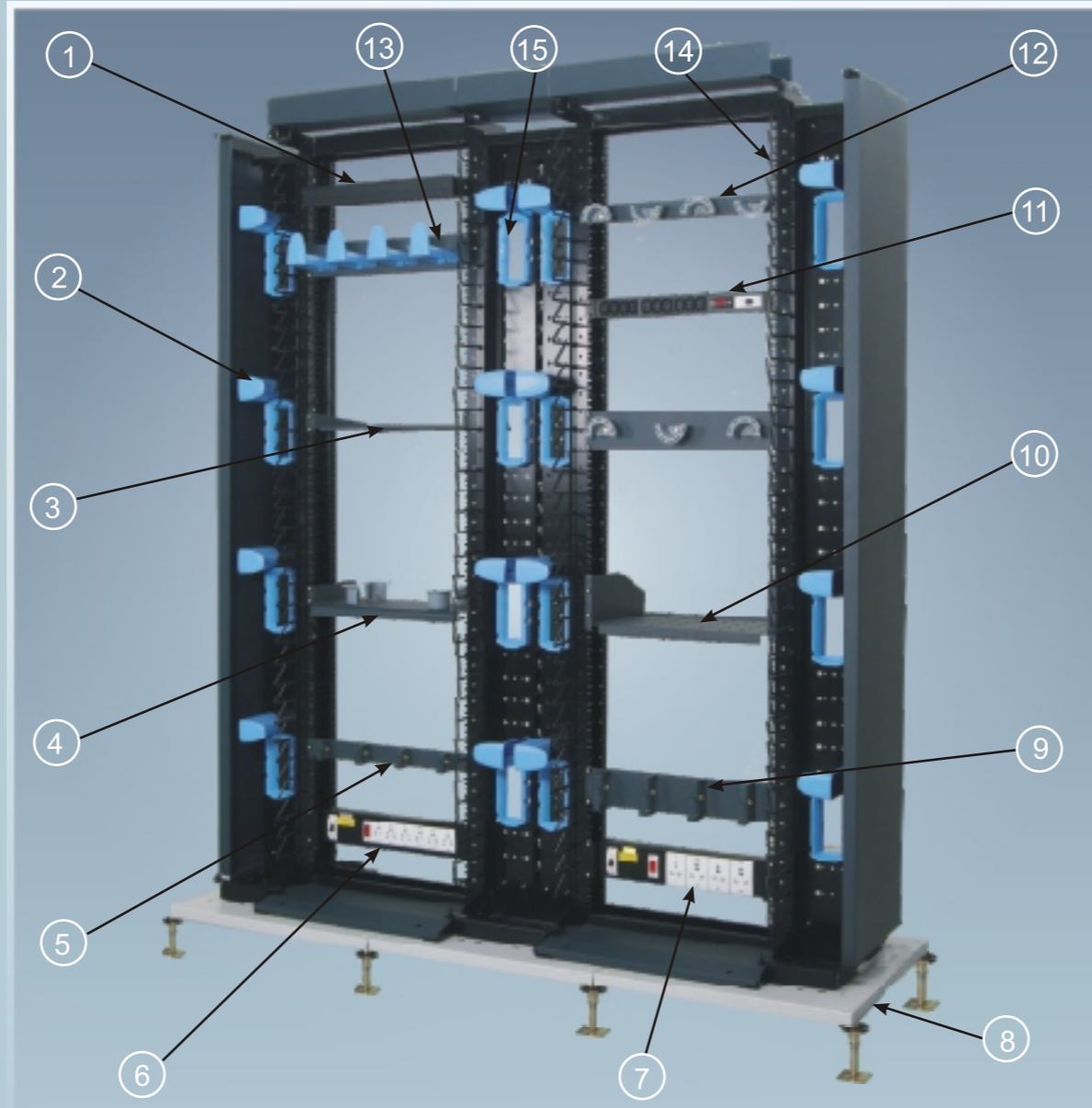


This AC Distribution box is designed for 19" horizontal mounting and comes with 4 sockets of 5/15 Amps each, neon indicator and MCB of 15 Amps. **Order Code: 86-1810**

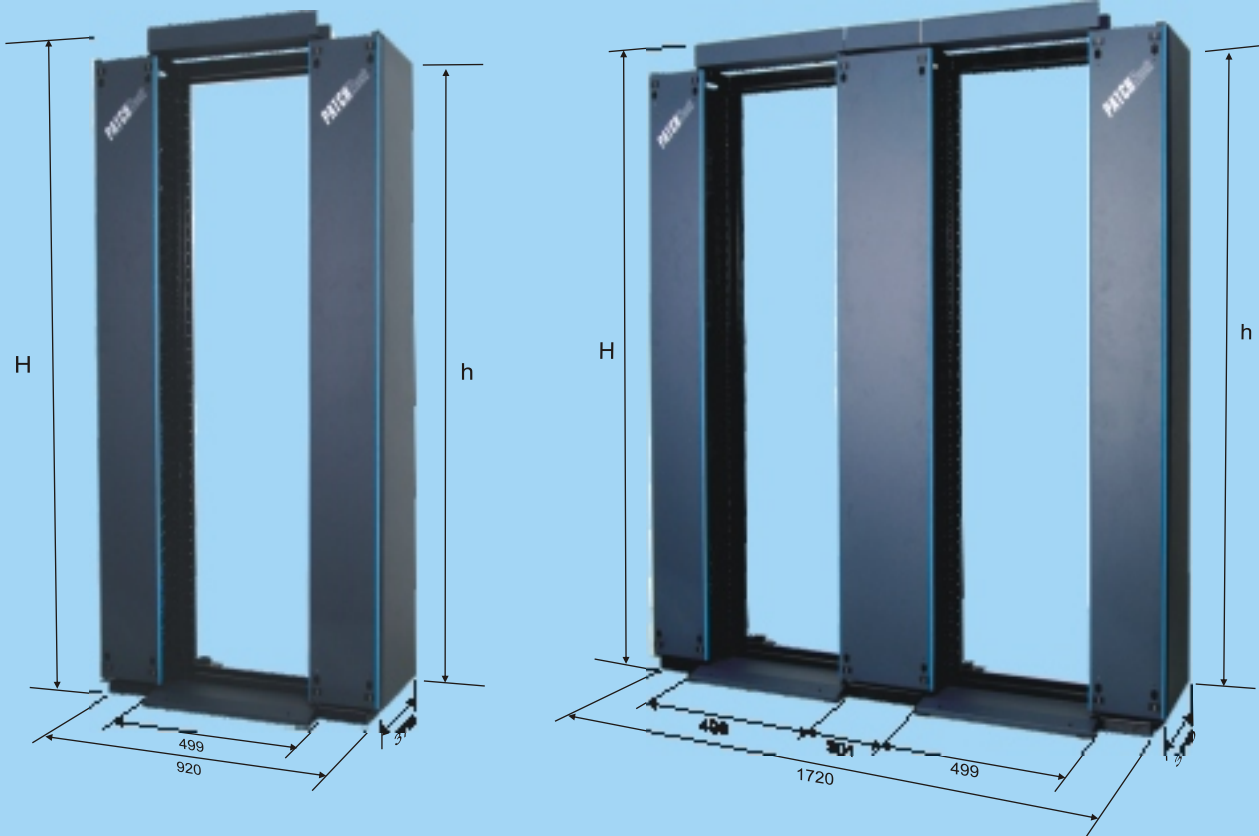
⑧ RAFT ASSEMBLY



Rafts are pre-drilled steel fabricated tiles. Replacing a standard suspended floor tile with the PatchRack Raft speeds up installation and avoids cutting of tiles in Data Centers. **Order Code: 86-6510**



PATCHRack



Dimensions

"U"	Height	
	Overall H	Usable h
42U	2056.8	1937.6
47U	2279.1	2159.9

Scope of Supply

SINGLE FRAME		Qty	DOUBLE FRAME		Qty
● Open Frame 19"		1	● Open Frame 19"		2
● Left Cable Channel		1	● Left Cable Channel		1
● Right Cable Channel		1	● Right Cable Channel		1
● Front Left Panel		1	● Centre Cable Channel		1
● Front Right Panel		1	● Front Left Panel		1
● Upper Cable Conduit		1	● Front Right Panel		1
● Side Panels		2	● Front Centre Panel		1
● Cable Hanger LH, set of 3		1	● Upper Cable Conduit		3
● Cable Hanger RH, set of 3		1	● Side Panels		2
● Window Moulding		8 *	● Cable Hanger LH, set of 3		2
● Cable Retention Bobbins		10 *	● Cable Hanger RH, set of 3		2
● Hardware, Packet of 20		- *	● Window Moulding		16 *
			● Cable Retention Bobbins		20 *
			● Hardware, Packet of 20		- *

Note: Items marked * are optional and must be ordered separately.
Any number of PatchRack frames can be coupled together.

Ordering Information

Description	Single Bay	Double Bay
PatchRack 42U, 19"	PR-3442-1	PR-3442-2
PatchRack 47U, 19"	PR-3447-1	PR-3447-2

For information on accessories & quantity required, please contact us at info@apwpresident.com



APW PRESIDENT SYSTEMS LTD.

R-2, Technopolis Knowledge Park, Mahakali Caves Road, Andheri (East), Mumbai 400 093. India
Phone: +91 22 6644 8888 Fax: +91 22 6644 8899 Email: info@apwpresident.com
Website: www.apwpresident.com