

WALL MOUNT CABINETS EASIBOX

The *Easibox* range of wall mount cabinets are ideal for the modern office environment. These enclosures are available in either single section or double section configuration. The double section design provide easy access to the rear of the equipment mounted in the cabinet. The welded frame construction adds rigidity to the structure. With top and bottom cable entry provision, these wall mount cabinets provide optimal flexibility for cable management.

Features

Single Section Unit

- Rigid frame that can be fixed to the wall
- Adjustable 19" rails in the front and rear
- Top and bottom cable entry facility
- Front section with glass door and lock
- Maximum load rating of 40 kgs
- 600mm wide x 500 / 600mm deep

Double Section Unit - additional features

- Rigid welded frame
- Rear wall-mounted section hinged to the front section
- Maximum load rating of 20 kgs
- Adjustable 19" rails at the front only

Sizes

Heights : 6U, 9U, 12U and 15U

Width : 600mm

Depths : 500mm & 600mm

Material & Finish

- Steel, Powder coated

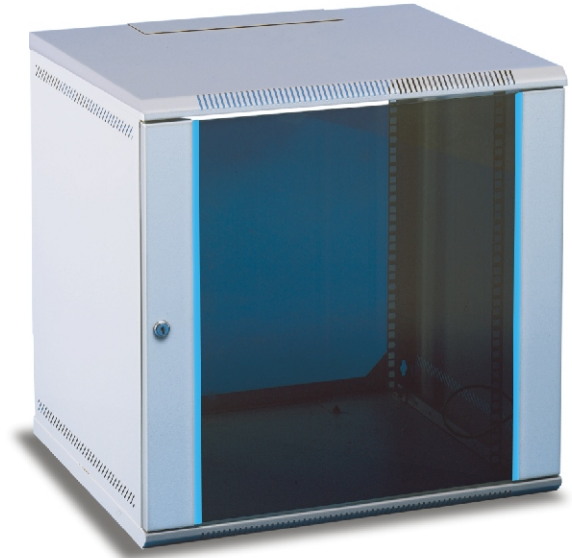
Ordering Information

Usable Height	Single Section 500D	Double Section 500D
6U	31-E406-Y	31-C206-Y
9U	31-E409-Y	31-C209-Y
12U	31-E412-Y	31-C212-Y
15U	31-E415-Y	31-C215-Y

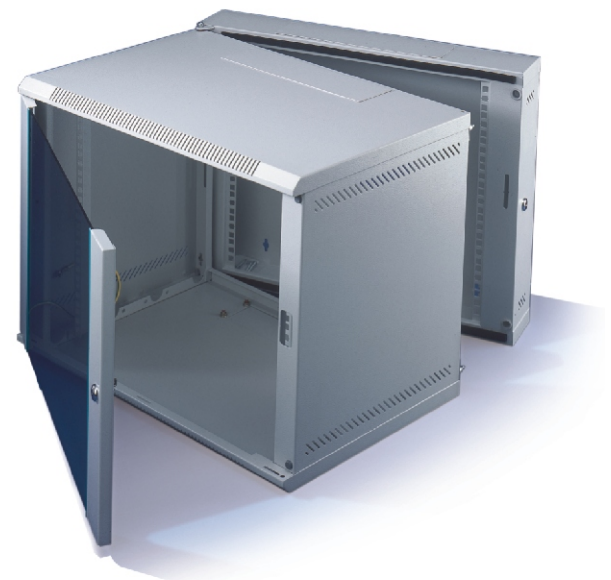
Usable Height	Single Section 600D	Double Section 600D
6U	31-E206-Y	31-C406-Y
9U	31-E209-Y	31-C409-Y
12U	31-E212-Y	31-C412-Y
15U	31-E215-Y	31-C415-Y

Wall Mount with Removable Side Panels

Usable Height	Single Section 500D	Single Section 600D
6U	31-R406-Y	31-R206-Y
9U	31-R409-Y	31-R209-Y
12U	31-R412-Y	31-R212-Y
15U	31-R415-Y	31-R215-Y



EASIBOX- Single section unit



EASIBOX- Double section unit

To specify finish use suffix 'Y' as below

Code	Cabinet, except Doors	Front Doors
Y=1	Light Grey, RAL 7035	Dark Grey, RAL 7037
Y=2	Anthracite Grey, RAL 7016	Anthracite Grey, RAL 7016
Y=3	Black, RAL 9003	Black, RAL 9003