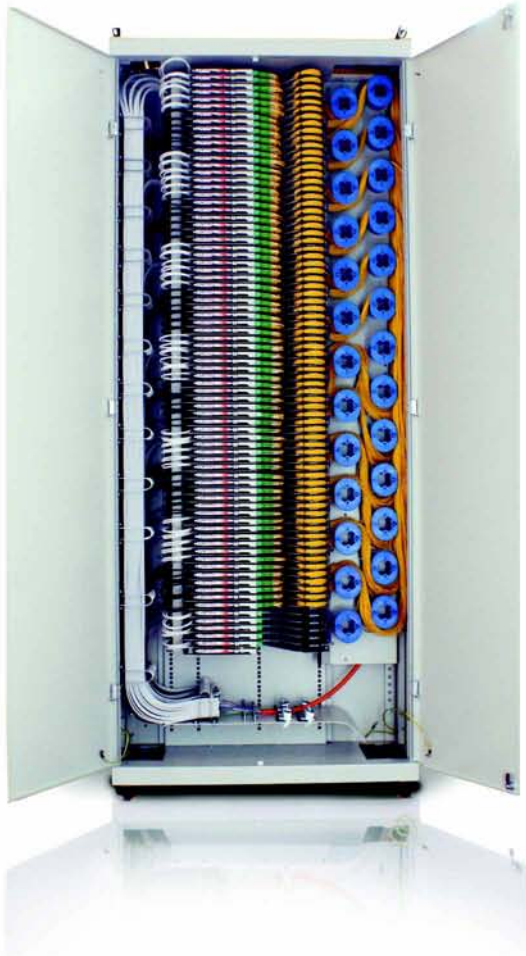


**Telecom  
Infrastructure  
Solutions**



# TROY

## Application Overview

The key to a successfully managed transmission network lies in the choice of the right fibre optic distribution system. CAN-ODF-700 solution provides flexible cabling access, expandable frame concept, integrated cable management and a future proof modular design with the highest termination capacity possible and superior cable management. High density side access type of modules is also designed to fit a variety of termination, splice and storage applications.



## Highlights

- Standard 19" and ETSI installations
- Designed to be used together with high density side access type modules
- Maximum fiber density and superior cable management
- Special cable glands to fix the maximum number of bundle cables on the ground
- 3 layer side fiber cable guide compartments to feed the modules via miniflex tubes
- No crushed or stressed fibers
- Wide range of splice, patch and cable storage options
- Bend Radius Protection 40 mm throughout entire frame and all modules
- Max Cable Protection
- Interchangeable cassettes for various cable/tube counts and connector styles
- Accepts WDM and splitter cassettes
- Integral patchcord management
- Density Information:
  - 14 Modules in 47U Frame
  - 144 ports / 3U Module - 2016 ports / Frame
- LC, SC, FC, ST, MTRJ, E-2000 interfaces, etc available
- The Frames are compliant to Telcordia Specification GR-449-core

## Technical Details

Dimensions	900 mm (W) x 300 mm (D) x 2200 mm (H)
Material	Mild Steel
Color	Powder coat RAL7035
Weight	120 kg / empty
Maximum port capacity	2016 Port
Maximum High Density Swing Modules	14 Pcs (14 x 144 ports = 2016 ports for any SFF connector / frame)
Compliance	GR-449-core of Telcordia Specification

## Applications

Fiber Transmission Networks in Telco's Central Office applications, FTTX applications, Fiber exchange systems, Utility Networks

# High Density Side Access Module



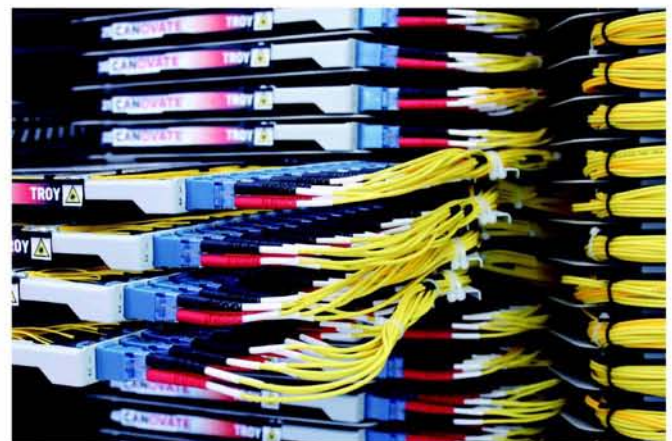
**Ultimate new design with the most advanced splice and patch system and cable management ever developed for high density applications on carrier and transmission side.**

- Compact 3U module
- Each U accommodates 2 fiber trays with each max. capacity of 24 fibers
- Max capacity of the module is 144 fibers for SFF connectors
- Modules are rear mounted for improved access
- Fiber trays and connected patchcords can slide in and out independently as a pull-out unit
- Easy side access ensures laser safety
- Special splice cassette design which allows splicing on one side and professional cable storage on the other side- no cable congestion!
- Cassettes are tiltable up to 135 degree for ease of installation and maintenance
- Special incoming cable fixing unit which ensures strong, easy and quick cable fixing for miniflex tubes - no need to use time consuming plastic cable ties!
- Integrated outgoing patchcord clamps and routing guides, which ensures min bend radius criteria of 35 mm and professional cable management

## Technical Details

Dimensions	486 mm (W) x 258 mm (D) x 133 mm (H)
Material	Mild Steel
Color	Powder coat RAL7035
Maximum port capacity	144 Ports for duplex SFF connectors
Weight	4 kg

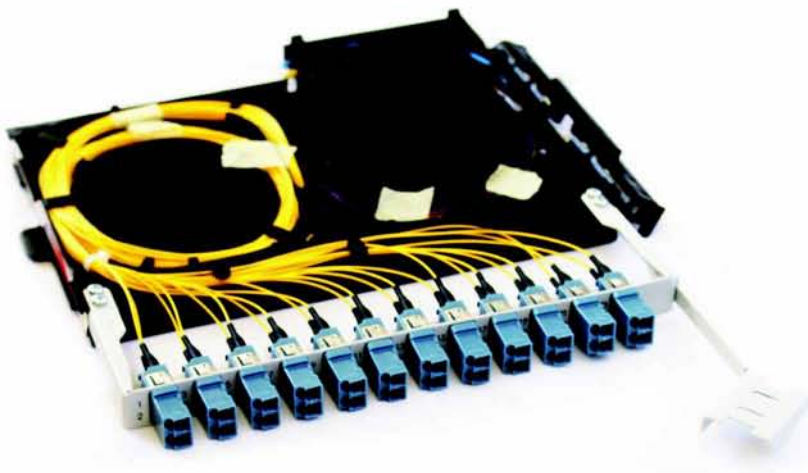
## Pull-Out Cassette System



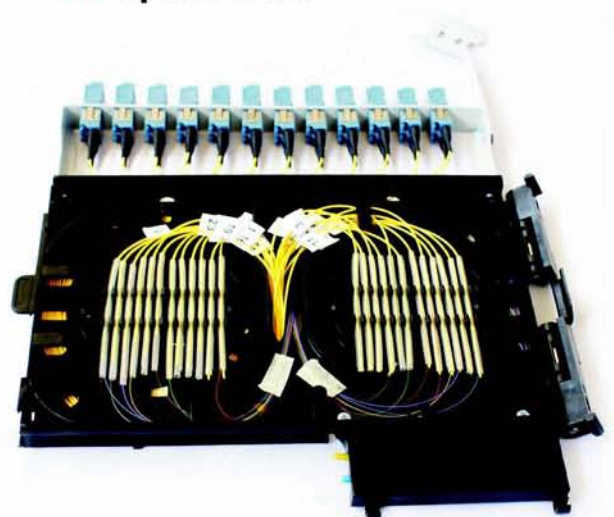


- Tiltable Double Sided Cassette System
- Professional labeling on the cassettes

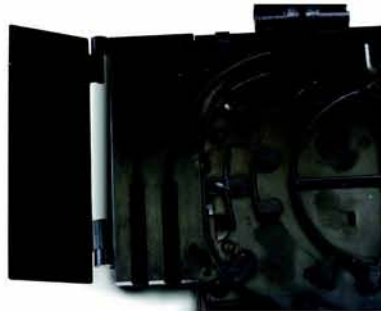
 Storage Side



 Splice Side



## Special Incoming fiber tube fixing system



## 3U ODF Tray Unit

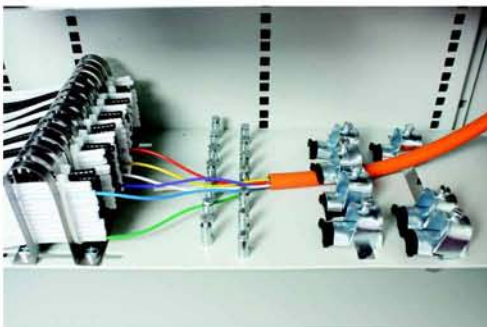


- Each U accommodates 2 fiber trays
- Integrated patchcord mandrels
- 19" rear mountable

## Incoming Cable Management

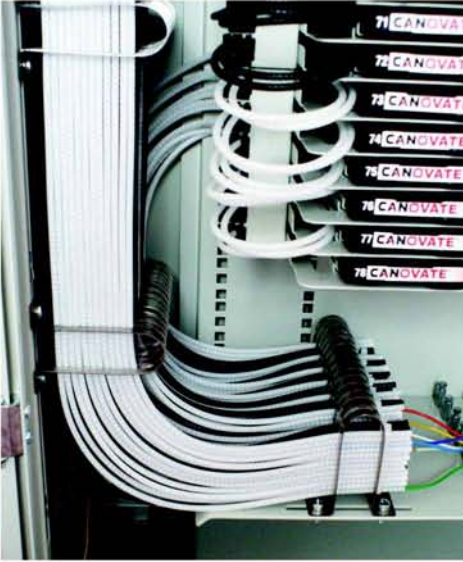


- Provides a secure anchor for incoming loose tube cables
- Adjustable cable glands suitable for different cable diameters
- Provides maximum protection for loose tubes
- Expandable - further cable glands can be added
- Provides easy access to existing cables and rapid installation of new ones



Special guiding slots ensure secure and flexible guidance of the fiber protection tubes to the splice modules.

## Miniflex Tubes

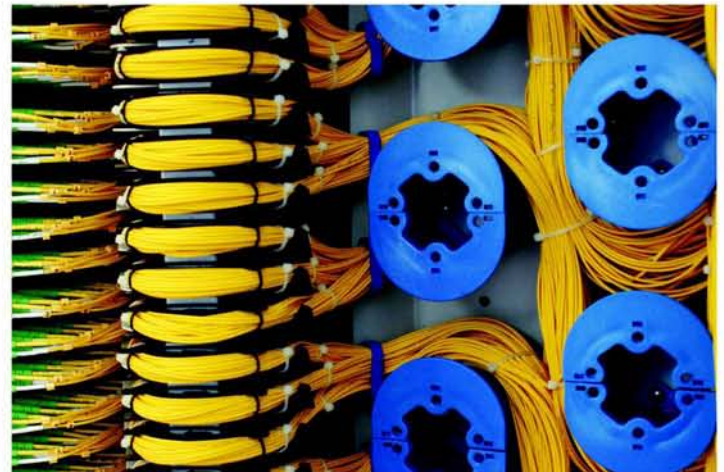


The Miniflex Optical Fibre Protection Tubing (OFPT) offers the ultimate protection to optical fibres and cables. It provides protection against crushing and kinking of fibres and hazardous tensile loads, while limiting any bends to an acceptable radius. It is the perfect cabling solution used in our Side Access High Density Optical Distribution Frame solution.

- Bending radius limitation of loose tubes up to  $\varnothing$  3 mm
- Flexible and kink resistant
- Easy insertion of loose tube
- Flame-retardant plastic (UL94 V-0), black or white

## Patchcord Management

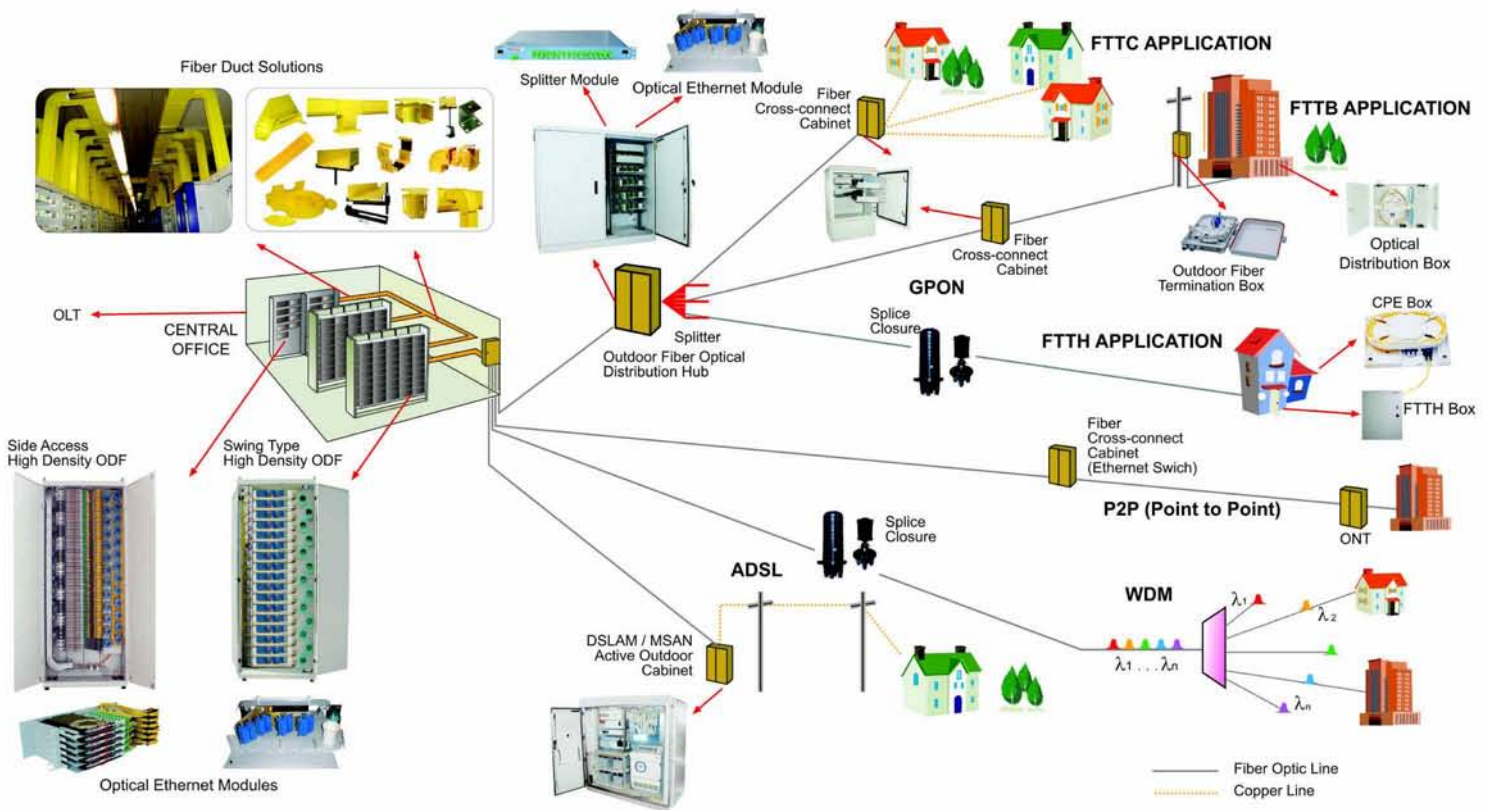
Patchcords are guides via special mandrels and cable guides to the excess cable storage area. Excess cables are stored via special bendradien to ensure required bending criterias.



## Special Radian and Cable Managers



# COMPLETE FTTX SOLUTIONS



**CANOVATE**<sup>®</sup>  
G R O U P

... in association with

**PRESIDENT**  
Solutions beyond enclosures