

PRESTIDENCE

Solutions beyond enclosures



World-Class Telecom Infrastructure Solutions

**Enhancing Customer Value ...
... through Innovation!**

For the last 3 decades, APW President Systems has been a leading designer, manufacturer and supplier of standard and customized enclosure systems.

We address three major business segments: Enterprise Solutions, Retail Products and Contract Services, with a focus on the IT/Networking and ITES, Telecom, General and Industrial Electronics sectors.

Our Unique Advantage

For most applications, customers have a choice of either steel or aluminum products that can handle equipment loads ranging from 250 kg to over a 1,000 kg. These products are fully supported with a range of accessories to match specific application needs. We also have the flexibility to manufacture, on contract basis, a wide variety of complex components for electronic applications.

Manufacturing and R&D

APW President pioneered India's modular enclosure industry, introducing the world standard 19-inch enclosure technology. Our Engineering Resources Center (ERC) provides design and engineering facilities supported by Pro-E, and other design tools for designing its products.

With a total of 20,000 sq m of fully-equipped modern manufacturing space (including our new plating facility at Bangalore), we have the capacity to make up to 60,000 enclosures, 70,000 card frames and 30,000 instrument cases each year.

Our facilities at Pune and Bangalore include state-of-the-art CNC Turret Presses, Press Brakes, Robotic Welding, as well as matching equipment for surface preparation. All operations are controlled by a full-fledged Computer Aided Manufacturing system.

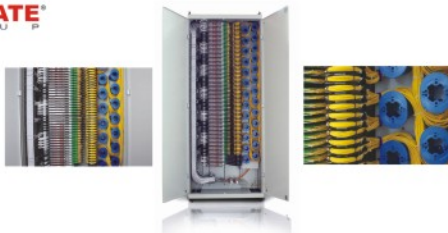
ISO Certification

With ISO 14001:2004 and ISO 9001:2000 certifications, our two factories at Pune and Bangalore follow world-class standards.



APW President now offers to customers in India the latest world-class Fiber Optic Network Infrastructure Solutions for Telecom and IT Data Center applications from Canovate Electronics.

CANOVATE®
G R O U P



Canovate Electronics

Headquartered in Alemdar, Istanbul, Turkey, Canovate Electronics is part of the Canovate Group (worth 250 Million USD), with 40,000 customers in more than 60 countries on six continents, employing 300 people.

Backed by 35 years of experience in the industry, inherited from Alcatel, the company designs, develops, manufactures and markets Fiber Optic Connectivity-based FTTX and Fiber Optic Transmission-Access products and data center infrastructure solutions from a state-of-the-art 24,000 square meter manufacturing facility.

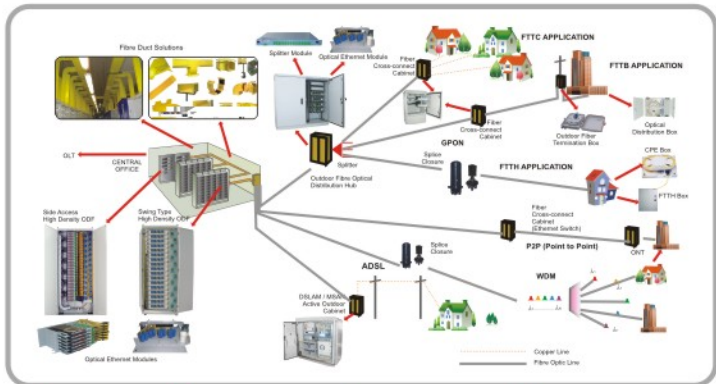
"FTTX and associated technologies are driving the rapid fiber network evolution. With the shift from point-to-point architectures to point-to-multipoint systems, FTTX infrastructure technologies are being increasingly deployed throughout the world. Our partnership with APW President is an opportunity for Telecom and IT facilities managers in India to get access to the state-of-the-art technologies and products in the fiber optic space," says Can GÜR, CEO of Canovate Electronics.

Adding Customer Value

"As a leader in IT and Telecom infrastructure management systems, we continue to introduce best-in-class innovative technologies and application-specific solutions that are designed to set standards in customer value. We have partnered with Canovate Electronics as they are a leading name in IT and Telecom data center infrastructure technologies, offering world-class solutions to meet the needs of our customers," says E. A. Elias, Managing Director, APW President Systems.

The range of innovative advanced fiber optic networking infrastructure solutions from Canovate include high density Optical Distribution Frame (ODF) systems, outdoor fiber main distribution hubs, fiber cross-connect cabinets and last-mile solutions like fiber termination boxes. The FTTX family of solutions is being introduced through President's network of sales and service outlets in India.

APW President now brings to you a wide range of fiber optic telecom infrastructure solutions from **Canovate Electronics**.



- ① ODF Cabinets
- ② Outdoor Cabinets
- ③ Splice Closures
- ④ Optical Distribution Boxes



ODF (Optical Distribution Frame) Cabinets

Flexible, modular and pre-terminated ODFs consisting of Ethernet modules; splice modules, patch panels and splice shelves provide efficient and economical cross-connection and interconnection between FTTP equipment, splitters, WDMs and feeder cables.



Outdoor Cabinets

Weather-proof outdoor cabinets for installation of optical distribution modules. Assembly of modular optical building blocks with 19" dimensions with complete front mounting of all fiber optic components.



Splice Closures

Reliable, flexible and sealed fibre optic closures connect distribution and feeder cables at key junction points in the network.



Optical Distribution Boxes

Optical Distribution Boxes provide a flexible fiber management system for transitioning outside plant cable to inside cable and connector assemblies.

Outdoor Enclosures

Outdoor enclosures are designed for use in unprotected outdoor/street side environments. Careful design consideration has been given to making these enclosures as physically secure and vandal-proof as possible.



Features

- Robust welded construction
- Manufactured from CRCA /HDG steel
- IP 55/56 approved design
- Single skin/double skin construction
- Dual-door option for security/easy access
- Swing Frame design option for MDF/ Equipment
- Door ventilations with 20 Micron washable filters
- Multiple options for thermal solutions – DC Fans, Heat Exchanger, Panel AC
- Finish – 80 Micron Pure Polyester Powder Coated
- AC/DC Power Distribution Panel with circuit breakers

Benefits

- Customized solution based on application
- Easy to install
- Easy to relocate, if required
- Minimal objection to installations from property owners
- Scalable solution. Convenient for execution of site expansion programs
- Low maintenance and operational costs

ETSI Cabinets

The European Telecommunications Standards Institute (ETSI) format is the current standard for enclosures in the telecommunications industry today.

ETSI cabinets are generally of 2200mm height overall. Two versions are available - the 300mmD **shallow** ETSI Rack, which has fixed side panels, and the 600mmD **deep** ETSI Rack, which has removable side panels. Standard ETSI cabinets can be converted into 19" cabinets by using 19" equipment angles with conversion brackets.

Features

- Top and bottom cable entry provision with gland plates.
M10 lifting bolt provision
- 1 pair of ETSI panel mounts (2.0mm steel), zinc-plating with yellow passivation as a standard supply
- Pairs of panel mount supports in RAL 7035 shade
- Top panel of rectangular box type shape



Free Cooling Unit

A Free Cooling unit is an air handling solution that uses external air to cool the equipment inside the cabinet.



Features

- Free Cooling when ambient temperature is low
- Emergency cooling in case PAC fails
- Fan speed is reduced at low ambient temperatures to save power

Benefits

- Lower running time for AC units. Hence longer life for ACs
- Free cooling unit operates on 48VDC. Hence no need to run diesel generator sets
- Lower operating cost
- Positive investment payback

Heat Exchanger



Benefits

- Lower power consumption compared to an air-conditioning device
- Operates on DC power, hence safe from power failures
- Power consumption is low, thus extending battery life
- No mixing of air. Hence useful where polluted air has to be kept out of the cabinet

Panel Air Conditioner (PAC)

Panel Air Conditioners are designed for equipment cooling inside an ODC. They can be mounted on the top or side of the cabinet. PACs ensure closed-loop air circulation and protects equipment from contamination and dust which may hinder operations and cause unnecessary downtime.



Features

- Digital temperature controller with alarm
- Efficient quiet and long lasting rotary / reciprocating compressor
- High static backward curved fans

We have the capability for high volume manufacturing and assembly of complex and critical sheet metal cabinets, including networking enclosures, indoor and outdoor base stations for telecommunications and precision components.

Processes



Punching



Panel Bending



Robotic Welding

Plating Facility

The new plating facility at Attibele, Bangalore, built on a 4,500 sq.m plot, is close to the existing 12,000 sq.m plant.



Main Building



Plating line with row of tanks



In-house laboratory for Quality Assurance

Products



Indoor Cabinet



Outdoor Cabinet



BSC Cabinet



NCR Components

Enhancing Customer Value through Innovation!

APW President Sales Offices - India

Ahmedabad

Mustakim Munshi
Mobile: +91 93779 93472
Email: mustakim@apwpresident.com

Bengaluru

504, 6th Cross, 6th Block, Koramangala,
Bengaluru 560 095
Tel: +91 80 4110 5285 / 2550 0662 - 64
Fax: +91 80 2550 0699
Email: sales.blr@apwpresident.com

Chennai

144, Maalavika Centre, Kodambakkam
High Road, Chennai 600 034
Tel: +91 44 2821 7506 / 2823 5036 /
2820 6026
Fax: +91 44 2825 1008
Email: sales.chn@apwpresident.com

Chandigarh

Agumdeep S Bansal
Mobile: +91 98880 30772
Email: agumdeep@apwpresident.com

Delhi

29/2, Savitri Nagar Area, Phase I,
New Delhi 110 017
Tel: +91 11 4656 1321 - 23
Fax: +91 11 2681 3789
Email: sales.del@apwpresident.com

Hyderabad

304, 3rd Floor, Amsri Plaza, S.D. Road,
Secunderabad 500 003

Tel: +91 40 2770 5275 / 6521 8949
Fax: +91 40 2770 5285
Email: sales.hyd@apwpresident.com

Kochi

Gijo Joseph
Mobile: +91 98466 99924
Email: gijo@apwpresident.com

Kolkata

10A, Ho-Chi-Minh Sarani, Bell House
1st Floor, Kolkata 700 071
Tel: +91 33 2282 0720 / 4000 2439
Fax: +91 33 2282 0719
Email: sales.kol@apwpresident.com

Mumbai

303, New India Industrial Estate,
off Mahakali Caves Road, Andheri East,
Mumbai 400 093
Tel: +91 22 6154 0999
Fax: +91 22 6644 8899
Email: sales.mum@apwpresident.com

Pune

S-73 / 74, M.I.D.C., Bhosari,
Pune 411 026
Tel: +91 20 3048 3500 / 501
Fax: +91 20 2712 2223

Thiruvananthapuram

Sarath Kumar
Mobile: +91 99460 35670
Email: sarathkumar@apwpresident.com

Manufacturing Units

Bengaluru

5C/1, KIADB Industrial Area, Attibele
Bengaluru 562 107
Tel: +91 80 2782 0222 / 2782 0617 - 20
Fax: +91 80 2782 0333

Pune

S-73 / 74, M.I.D.C., Bhosari,
Pune 411 026
Tel: +91 20 3048 3500 / 501
Fax: +91 20 2712 2223

Puducherry

17/3 C, Gothi Industrial Complex,
Vazhuvavur Road, Kurumbapet,
Puducherry 605 009
Telefax: +91 413 227 5015
Email: vsuresh@apwpresident.com



Solutions beyond enclosures

APW President Systems Ltd., R-2, Technopolis Knowledge Park
Mahakali Caves Road, Andheri (East), Mumbai 400 093, India
Phone: +91 22 6644 8888 • Fax: +91 22 6644 8899
Email: info@apwpresident.com • www.apwpresident.com