

# ETSI CABINETS

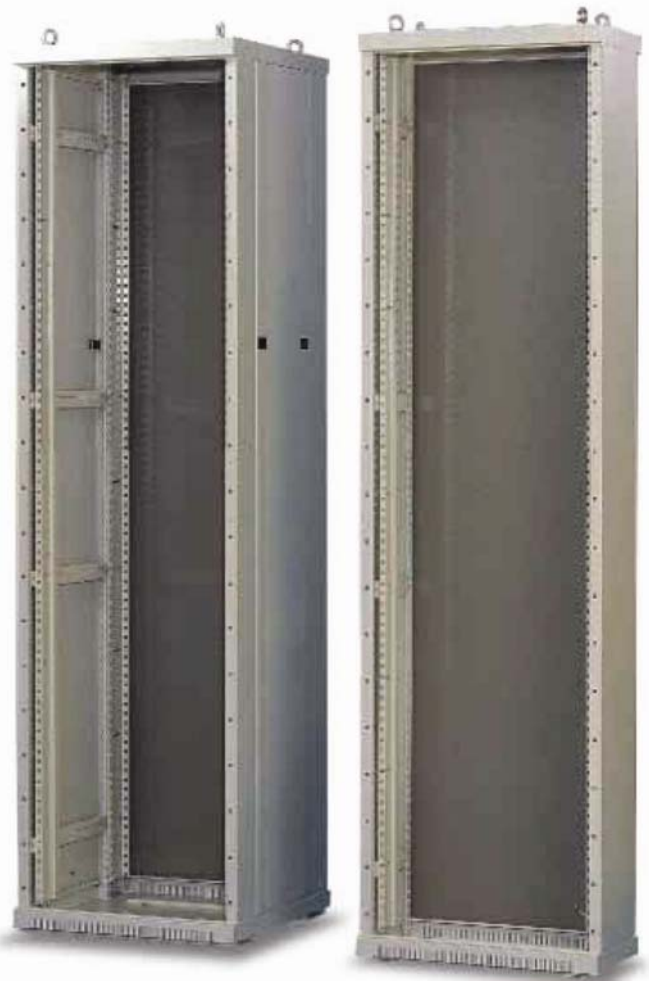
The ETSI standard is the current format for enclosures used in the Telecommunications industry and has been established by the European Telecommunications Standards Institute - hence ETSI.

The 19" standard is a general purpose format usable in a wide variety of applications - including Telecommunications. Whereas ETSI cabinets are meant specifically for Telecommunications applications - and to house telecom equipment built to the ETSI format.

However, 19" Rack mountable equipment can also be housed in ETSI cabinets through the use of 19" adapters which convert from ETSI dimensions to 19" mounting dimensions. But the opposite is not possible - i.e. ETSI equipment in 19" Racks.

ETSI cabinets are generally of 2200mm height overall, and either 300mm or 600mm depth, overall. They are almost always grouted to the floor and the ceiling as well. Cable entry provision is provided at top and bottom. Rear panels and front doors are optional.

Two versions are on offer - the 300mmD "SHALLOW" ETSI Rack, which has fixed side panels, and the 600mmD "DEEP" ETSI Rack, which has removable side panels.



## Features

- Top panel of rectangular box type shape
- Top and bottom cable entry provision with gland plates. M10 lifting bolt provision
- 1 pair of ETSI panel mounts (2.0mm steel) with zinc plating and yellow passivation as a standard supply.
- 4 pairs of panel mount supports in RAL 7035 shade.

## Sizes

Height : 2200mm  
 Width : 600mm  
 Depths : 300 & 600mm

## Material and Finish

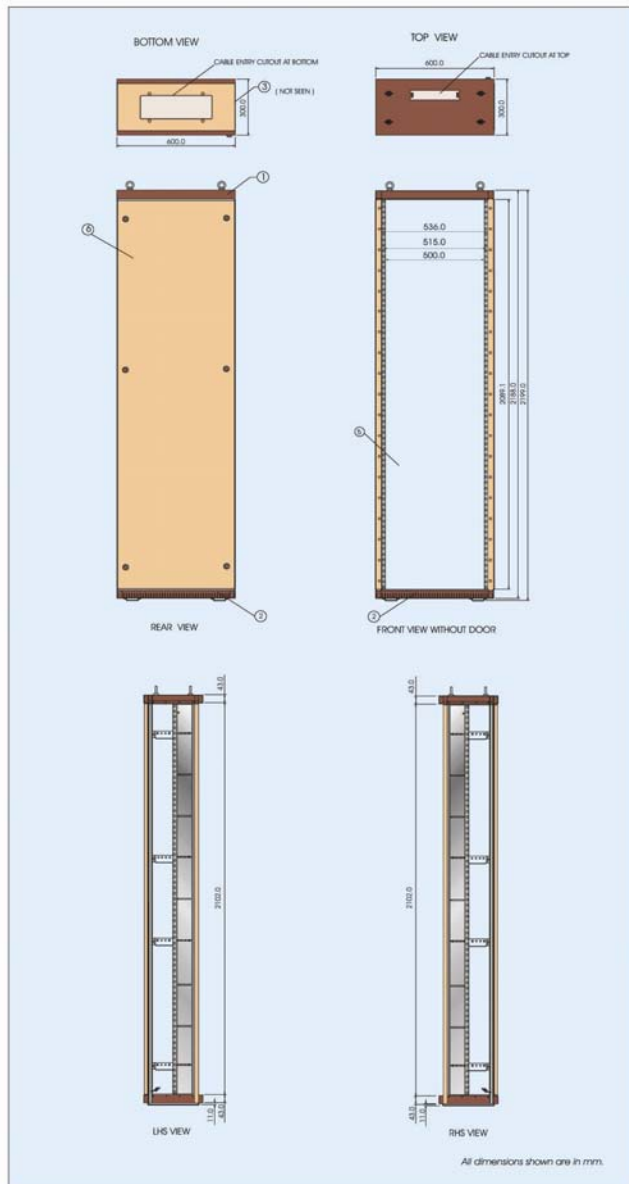
- Basic frame of welded construction made from Steel Sheet 1.2mm thick, and powder-coated RAL 7035 light grey shade.
- Side Panels and Bottom panels having vents, made from 1.2mm steel sheet.
- Steel & glass door in 1.2mm steel; rear panel in 0.9mm steel, powder coated RAL 7037 deep grey shade.



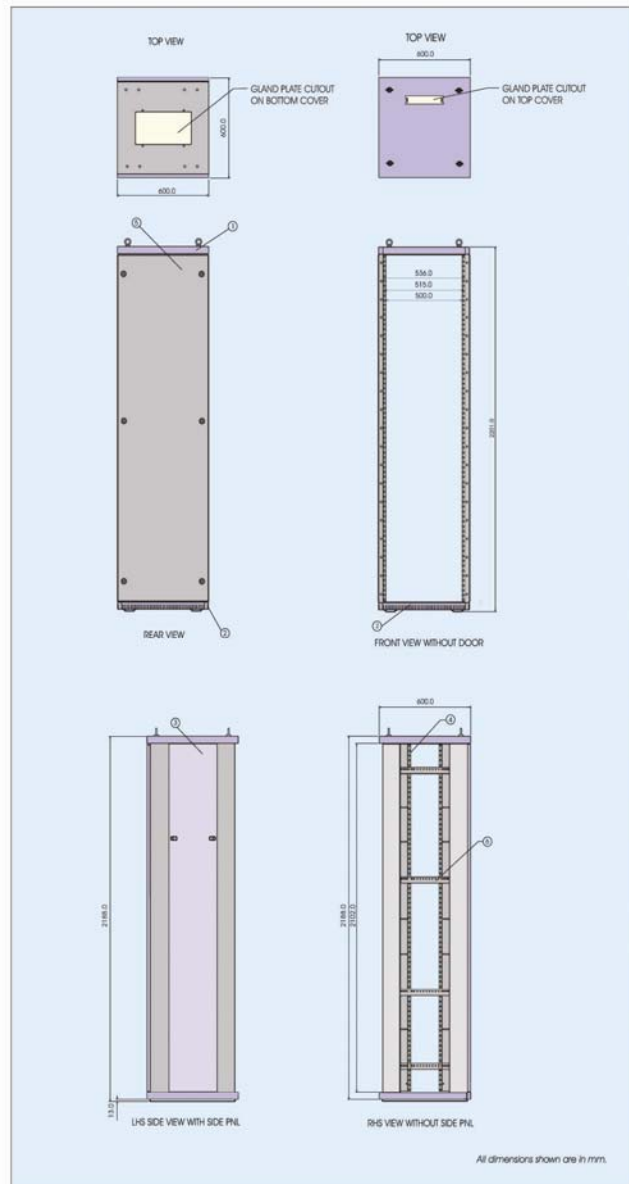
## Optional Accessories

- Steel/glass door
- Rear "Screw-on" panel
- Provision of adapter brackets on one side to facilitate conversion from ETSI mounting ( centre distance of mounting holes-515mm ) to 19" mounting practice ( centre distance of mounting holes-465mm )

## Dimensions



ETSI 300mm Deep



ETSI 600mm Deep

## Ordering Information

Description	Code
ETSI Rack, 2200H / 300D, ISP, Plain	33-E101-0
ETSI Rack, 2200H / 300D, ISP, Vented	33-E101-1
ETSI Rack, 2200H / 600D, RSP, Plain	33-E401-0
ETSI Rack, 2200H / 600D, RSP, Vented	33-E401-1

Description	Code
Door, Steel, ETSI, 2200H, Plain	33-67E1-0
Door, Glass, ETSI, 2200H, Tinted	33-68E1-0
Panel, Rear, ETSI, 2200H/0.9mm ms	33-50E1-0
Angles, ETSI Mounting, 2200H	86-1801
Angles, 19" Ver+Mtg Brkts, 2200H	86-1802